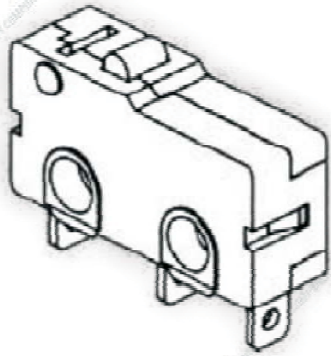


CODIGO

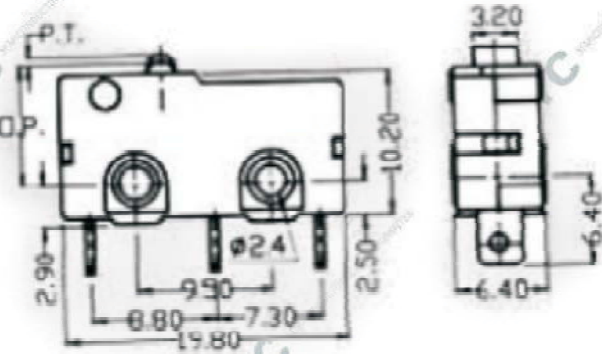
SM-05X-00X

DESCRIPCION

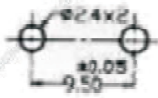
Switch



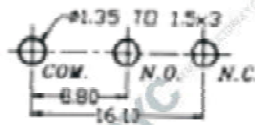
OUTLINE DRAWING



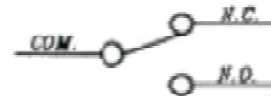
MOUNTING HOLES



P.C.B MOUNTING HOLE DIMENSIONS

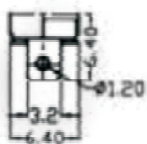


CONTACT CONFIGURATION



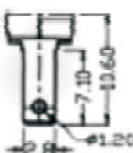
TERMINALS

SOLDER



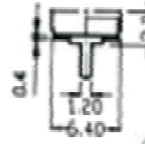
(A)

QUICK CONNECT(φ10)



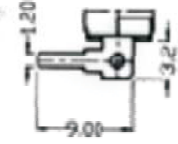
(C)

P.C.B TERMINAL



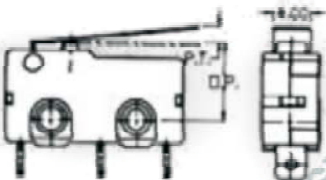
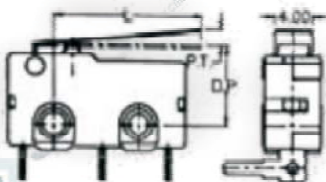
(P)

P.C.B TERMINAL



(V)

OUTLINE DRAWING



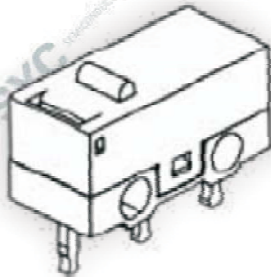
NO.	HINGED TYPE	O.P. (mm)	P.T. Max (mm)	O.T. Min (mm)	M.D. Max (mm)	O.F.		R.F.	
						L	S	L	S
						Max.(gf.)		Min.(gf.)	
00	NO FLINGER	8.4±0.5	0.4	0.7	0.2	100	150	15	35
01	SHORT	9.2±0.8	1.5	1.7	0.8	25	45	5	12
02	STANDARD	9.4±0.8	1.8	2.3	0.8	20	45	5	12
03	LONG	9.5±0.8	2.3	3.0	0.8	15	40	5	12
04	AMPLIFIED	10.5±0.8	2.8	1.0	0.8	15	40	5	12
05	KILLER	9.2±0.8	2.5	1.5	0.8	15	40	5	12
06	BENDING	13.0±0.8	2.0	1.5	0.8	15	40	5	12

CODIGO

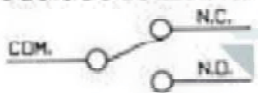
SM-05X-00X

DESCRIPCION

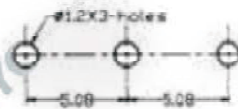
Switch



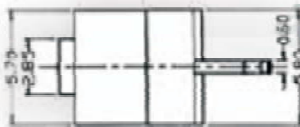
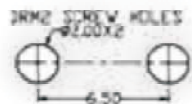
CONTACT CONFIGURATION



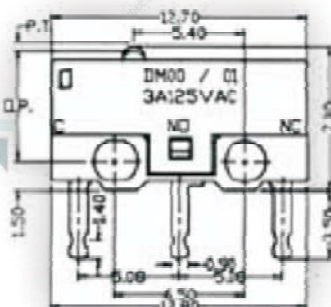
P.C.B. MOUNTING HOLE DIMENSIONS



MOUNTING HOLES



OUTLINE DRAWING



FEATURES:

- Large overtravel.
- Small compact size.
- Insert molding in the contact prevent flux build-up during soldering and permits auto dipping.
- Long life Be-Cu spring Mechanism.

SPECIFICATIONS:

GENERAL:

1. Operating temperature:-25°C-+85°C.
2. Ambient humidity:85% RH Max.

CONTACT ARRANGEMENT:S.P.D.T.

RATING: DMDML..... 3A/125VAC.

PERFORMANCE:

Electrical:

1. Contact resistance:50mΩ Max (initial)
2. Insulation resistance: 100MΩ Min.
(Between adjacent contact)
3. Dielectric withstanding voltage:
..... 1000VAC 50/60Hz for 1 minute.

Mechanical:

1. Operating force:

- DM-00 (without lever) 125g±25gf.
- DM-01 (with lever) 35g±10gf.
- DML-00 (without lever) 60g±15gf.
- DML-01 (with lever) 15g±5gf.

2. Operating point:

- DM-00 (without lever) 5.5±0.2mm.
- DM-01 (with lever) 6.8±0.5mm.
- DML-00 (without lever) 5.5±0.2mm.

3. Operating speed: 1mm-500 mm/s.

4. Operating frequency:120 operations/min.

ENDURANCE:

Mechanical:

- DM-00 1,000,000 operations.
- DM-01 1,000,000 operations.
- DML-00 1,000,000 operations.
- DML-01 1,000,000 operations.
(at 120 times/min O.T. 70%-100%)

Electrical: 300,000 operations.

(at 60 times/min O.T. 70%-100% at rating load)

Soldering temperature: 255°C Max.(3 sec)

Weight: About 0.5g (Pin plunger type)

MODEL	OF (gf.)	FP (mm)	CP (mm)	PT (mm)	MD (mm)	OT (mm)
DM-00	125±25	5.8±0.1	5.5±0.2	0.5 Max	0.14 Max	0.2 Min
DM-01	45 Max	10 Max	6.8±0.5	1.8 Max	0.5 Max	0.55 Min
DML-00	60±15	5.8±0.1	5.5±0.2	0.5 Max	0.14 Max	0.2 Min
DML-01	15±5	10 Max	6.8±0.5	1.8 Max	0.5 Max	0.55 Min

ORDERING GUIDE:

DM X · XX

Mark of Actuator:

- 00-Pin plunger.
- 01-Standard hinge lever.
- 04-Simulated hinge lever.
- 04A-Ultra simulated hinge lever.

Mark of stem color:

- DM - White
- DML-Green

