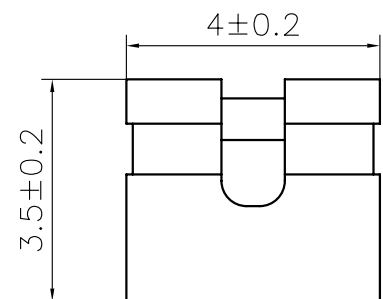
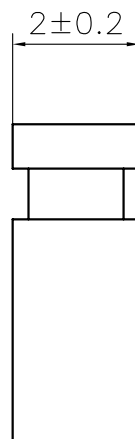


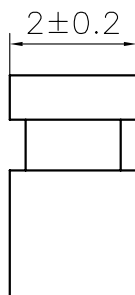
2205BG
(Close Type)

2205BG=5.0MM Length Colse Type(Black)



2205CG
(Opem Type)

2205CG=3.5MM Length Open Type(Black)



Specifications:

Current rating:3 Amps
Dielectric Withstanding:AC 650V
Operating Temperature:-25°C ~ +105°C
Contact resistance:30mohm max.
Insulation resistance:1,000Mohm min.

Materials:

Insulator:30% Glass Filled P.B.T. (UL94V-0)
Contact material:Phosphor Bronze
Plating:Gold Plated

RoHS Compliant

| | |
|---|--|
| GENERAL TOLERANCE: .X=±0.2 .XX=±0.15 | |
| UNIT: mm | DESCRIPTION: 2.0MM MINI JUMPER |
| SCALE: | |
| SHEET: 1 / 1 | PART NO: MJ02-2MM |
| PROJECTION: | |

SIZE
A4