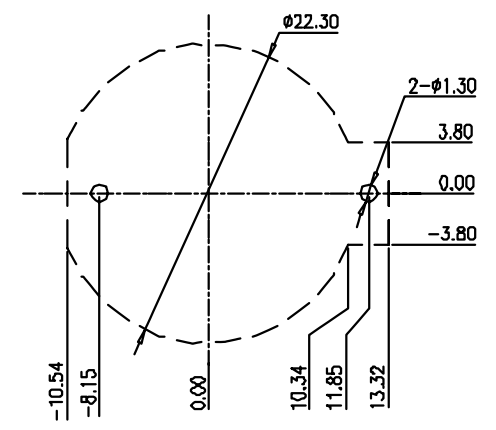
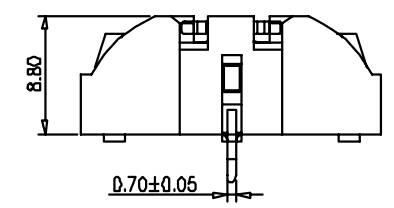
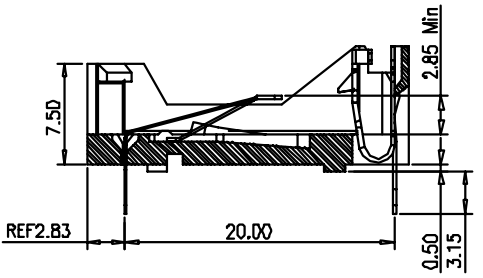
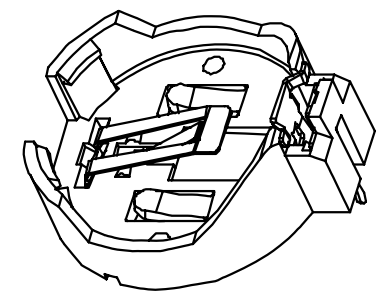
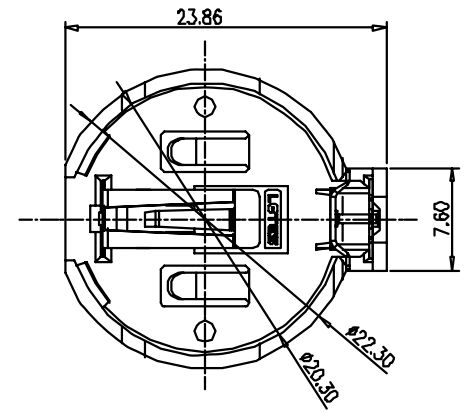


NOTES:  
 1.MATERIAL:  
 HOUSING: THERMOPLASTIC,UL 94V-0,BLACK.  
 CONTACT: COPPER ALLOY  
 2.CONTACT FINISH:  
 50u" Min. NICKEL UNDERPLATING,100u" Min. TIN ON THE CONTACT.  
 3.ACCORDING TO THE ENVIROMENTAL REQUIREMENT,WARRANTY  
 THE CONTROLLED HAZARDOUS SUBSTANCE SHOULD BE  
 MEET ROHS'S SPECIFICATION.



RECOMMENDED PC BOARD LAYOUT

RoHS Compliant



GENERAL TOLERANCE: .X=±0.20 .XX=±0.15		DESCRIPTION: Battery Holder For CR2032	SIZE <b>A4</b>
UNIT: MM	PART NO: CR2032		
SCALE: 1:1			
SHEET: 1 / 1			
PROJECTION:			